

One Hour Assembly without e.z. barrier

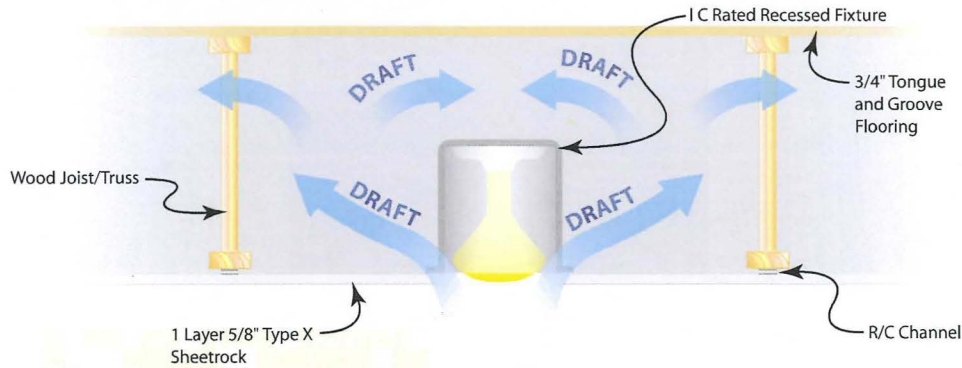


Figure 1

In the event of a fire, the opening in the sheetrock along the outside edge of a recessed light fixture is not protected from fire. A seal must be established to maintain the integrity of the one-hour assembly. The IC rated fixture, although rated, *is not rated to protect the integrity of the assembly.*

Non-Rated Assembly without e.z. barrier

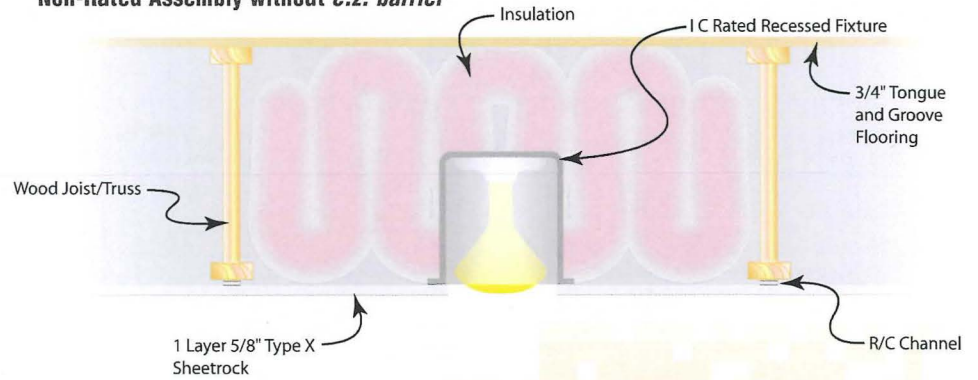


Figure 3

This is an approved installation in a non-rated floor/ceiling assembly. *However, heat buildup around the fixture has shown to reduce bulb life and set off heat sensors.*

One Hour Assembly with e.z. barrier

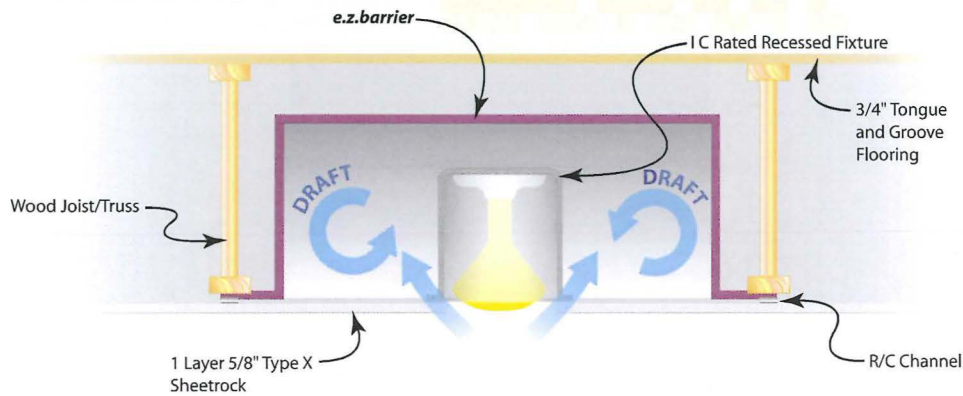


Figure 2

e.z. barrier restricts fire from migrating into the concealed space, thereby maintaining the integrity of the one-hour assembly.

Non-Rated Assembly with e.z. barrier

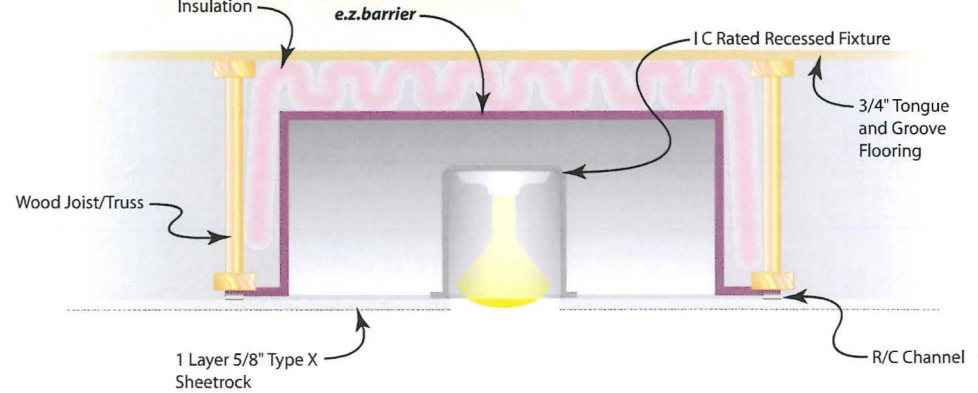


Figure 4

Using *e.z. barrier* in a non-rated assembly allows you to use a non-rated fixture and provide an air space around the fixture for cooler operating temperatures.

One Hour Assembly without e.z. barrier

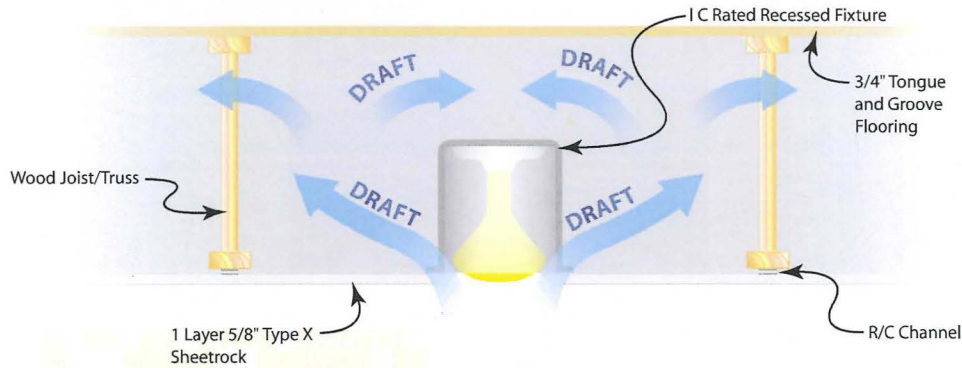


Figure 1

In the event of a fire, the opening in the sheetrock along the outside edge of a recessed light fixture is not protected from fire. A seal must be established to maintain the integrity of the one-hour assembly. The IC rated fixture, although rated, **is not rated to protect the integrity of the assembly.**

One Hour Assembly with e.z. barrier

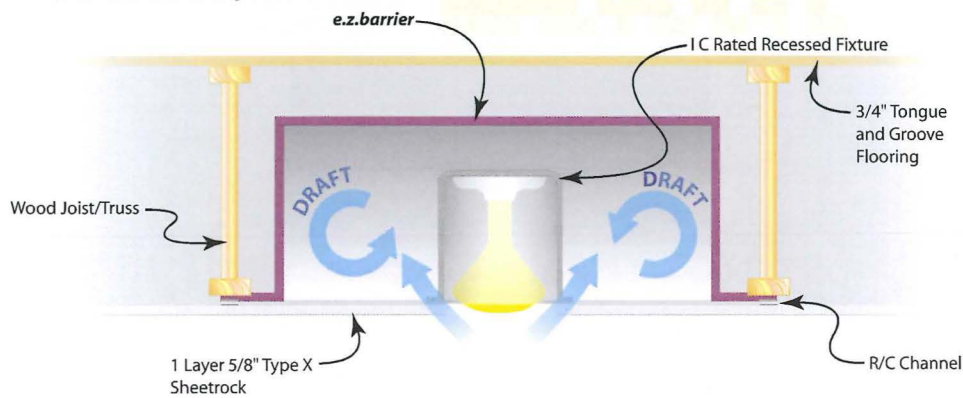


Figure 2

e.z. barrier restricts fire from migrating into the concealed space, thereby maintaining the integrity of the one-hour assembly.

Non-Rated Assembly without e.z. barrier

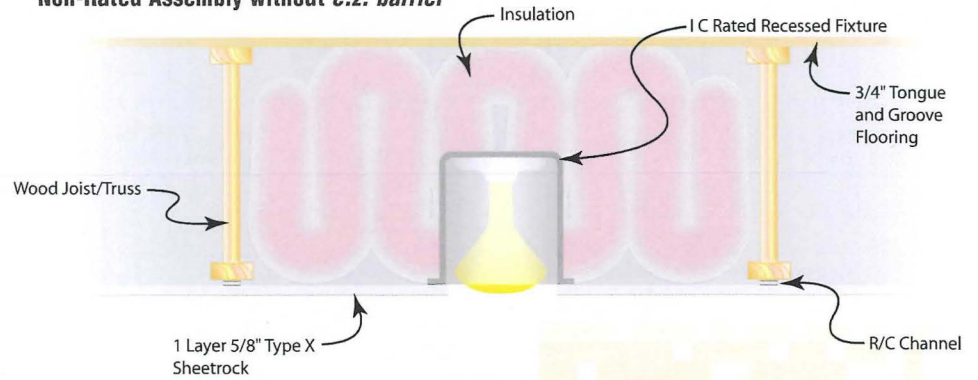


Figure 3

This is an approved installation in a non-rated floor/ceiling assembly. **However, heat buildup around the fixture has shown to reduce bulb life and set off heat sensors.**

Non-Rated Assembly with e.z. barrier

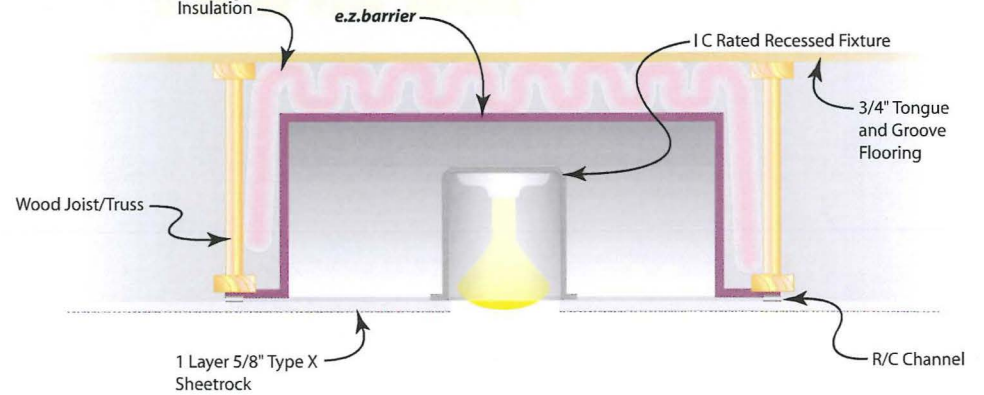


Figure 4

Using **e.z. barrier** in a non-rated assembly allows you to use a non-rated fixture and provide an air space around the fixture for cooler operating temperatures.

One Hour Assembly without e.z. barrier

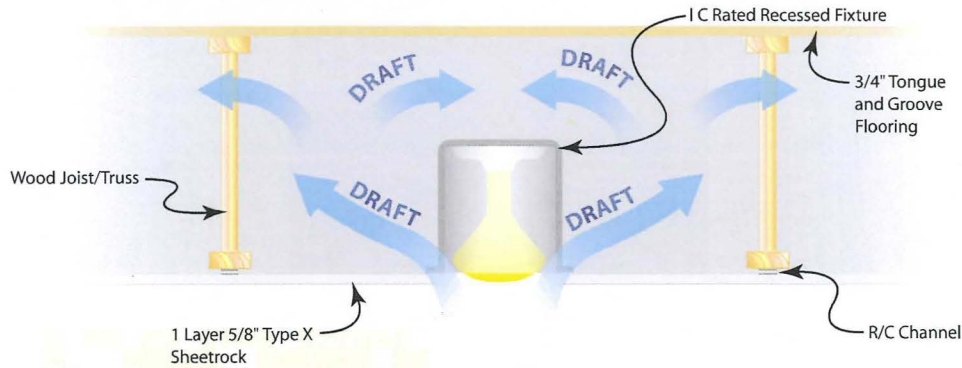


Figure 1

In the event of a fire, the opening in the sheetrock along the outside edge of a recessed light fixture is not protected from fire. A seal must be established to maintain the integrity of the one-hour assembly. The IC rated fixture, although rated, *is not rated to protect the integrity of the assembly.*

Non-Rated Assembly without e.z. barrier

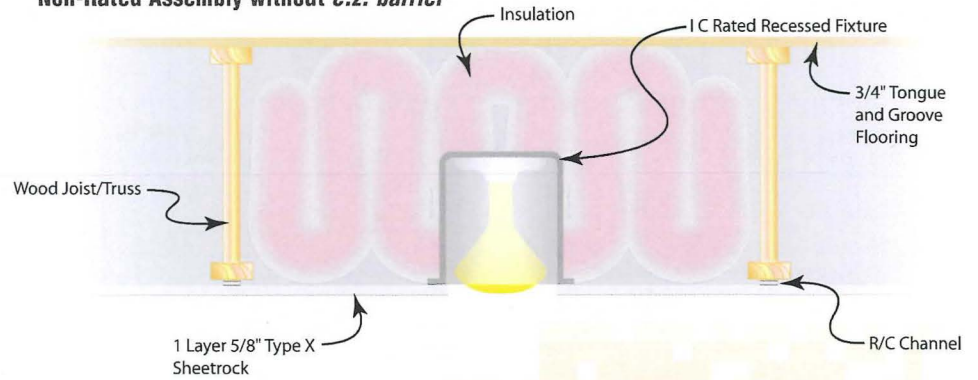


Figure 3

This is an approved installation in a non-rated floor/ceiling assembly. *However, heat buildup around the fixture has shown to reduce bulb life and set off heat sensors.*

One Hour Assembly with e.z. barrier

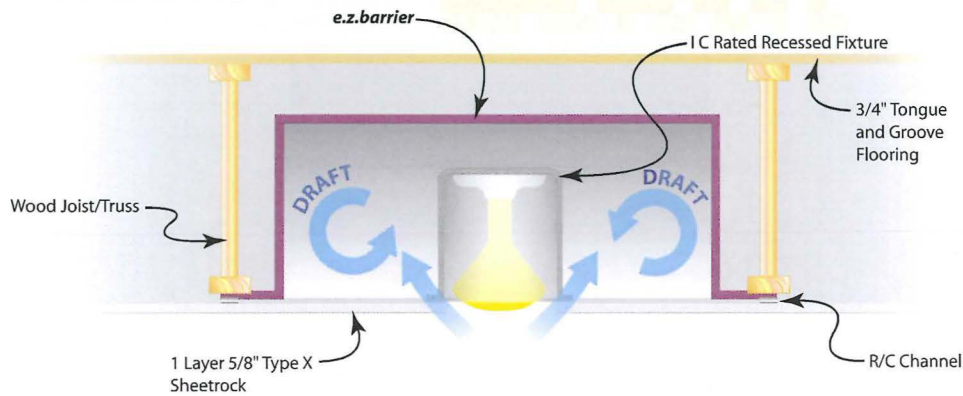


Figure 2

e.z. barrier restricts fire from migrating into the concealed space, thereby maintaining the integrity of the one-hour assembly.

Non-Rated Assembly with e.z. barrier

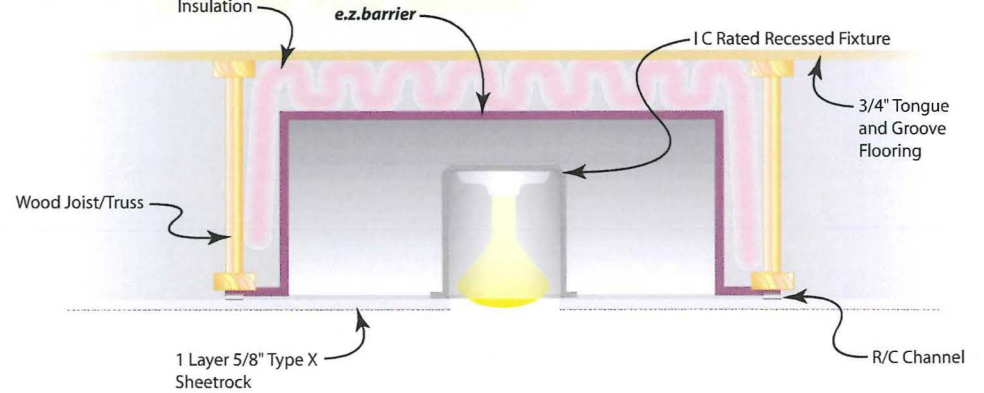


Figure 4

Using *e.z. barrier* in a non-rated assembly allows you to use a non-rated fixture and provide an air space around the fixture for cooler operating temperatures.